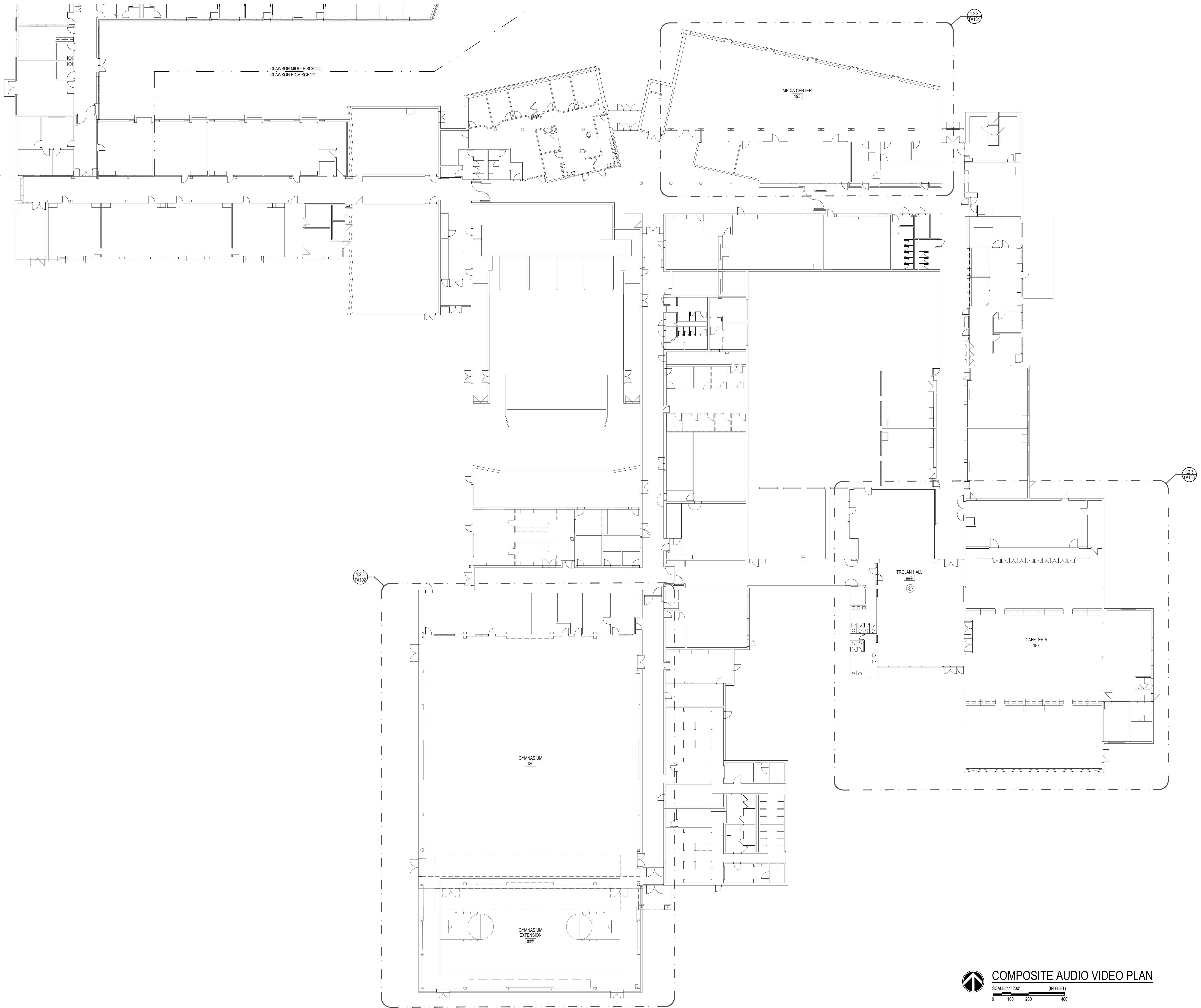


PROJECT NAME: _____



CLAWSON PUBLIC SCHOOLS
AUDIO VIDEO SYSTEMS
 CLAWSON HIGH SCHOOL



PROJECT NO.:
 23-CPS-AVS-01

DATE: 2023.04.14
 ISSUED FOR: BIDS

DESIGN BY: BIMJ
 DRAWN BY: BIMJ
 CHECKED: SJB

SHEET NAME:
**COMPOSITE
 AUDIO VIDEO
 PLAN**

SHEET NO.:

TA101

COMPOSITE AUDIO VIDEO PLAN
 SCALE: 1"=200' (IN FEET)
 0 100' 200' 400'

GENERAL AUDIO VIDEO NOTES:

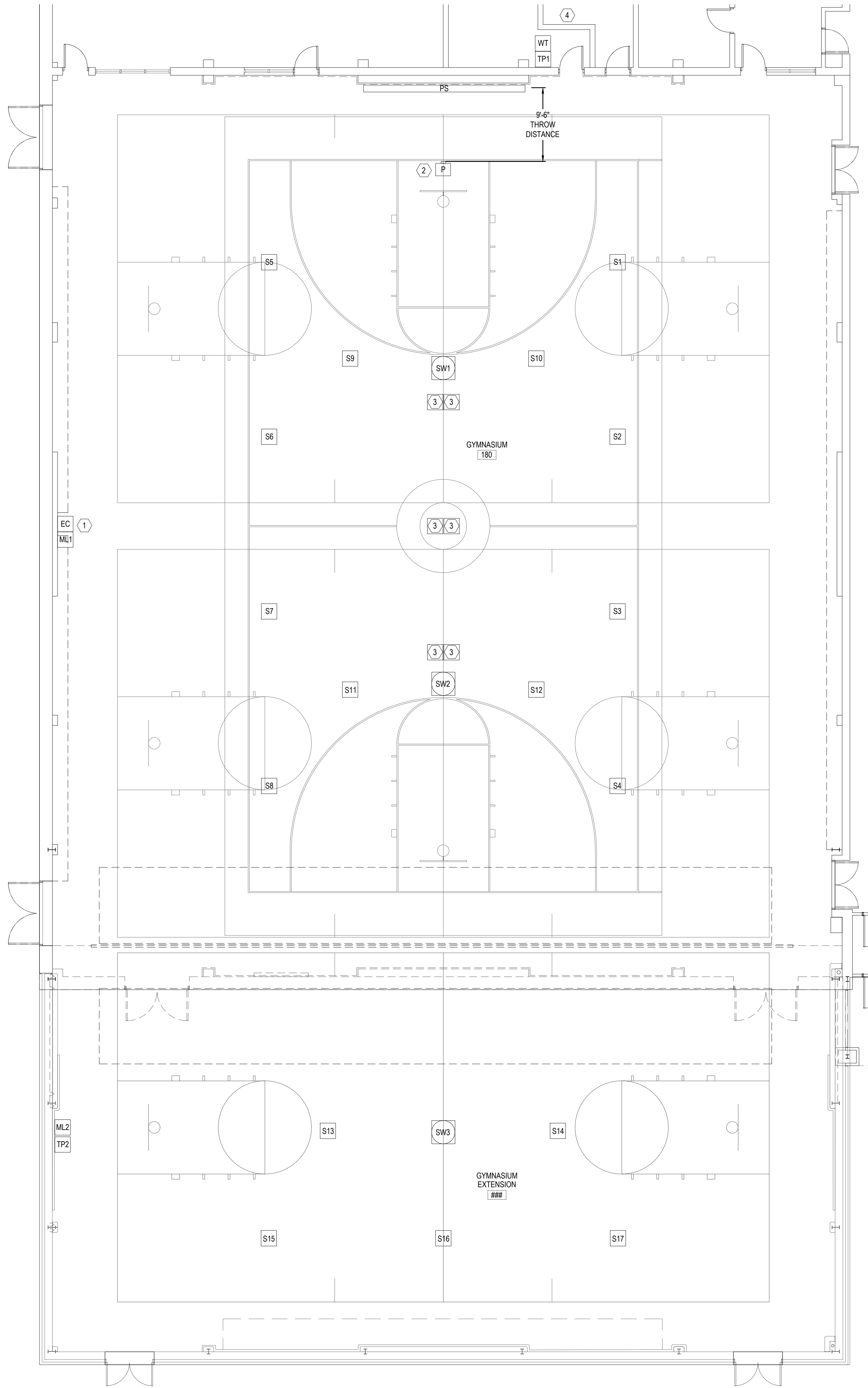
- E.C. TO PROVIDE ALL CONDUITS, SLEEVES, AND BACK BOXES FOR AUDIO VIDEO CABLING.
- PRODUCT MANUFACTURER AND PART NUMBERS SHOWN ARE BASIS OF DESIGN ONLY AND MAY BE SUBSTITUTED WITH PRODUCTS THAT MEET OR EXCEED THE SPECIFICATIONS OF THE BASIS OF DESIGN PRODUCTS.

KEYED AUDIO VIDEO NOTES:

- VERIFY EXACT LOCATION WITH OWNER PRIOR TO MOUNTING AND INSTALLATION.
- INSTALL PROJECTOR IN CHIEF PGSA EXTRA LARGE PROJECTOR GUARD SECURITY CAGE.
- REMOVE EXISTING ELECTRO-VOICE GYMNASIUM SPEAKERS, MOUNTS, AND ASSOCIATED HARDWARE AND CABLING. RETURN TO OWNER AT REQUEST OR DISPOSE OF PROPERLY. TOTAL OF SIX (6) EXISTING SPEAKERS.
- REMOVE EXISTING AV RACK, AV EQUIPMENT, AND CABLING. RETURN TO OWNER AT REQUEST OR DISPOSE OF PROPERLY.

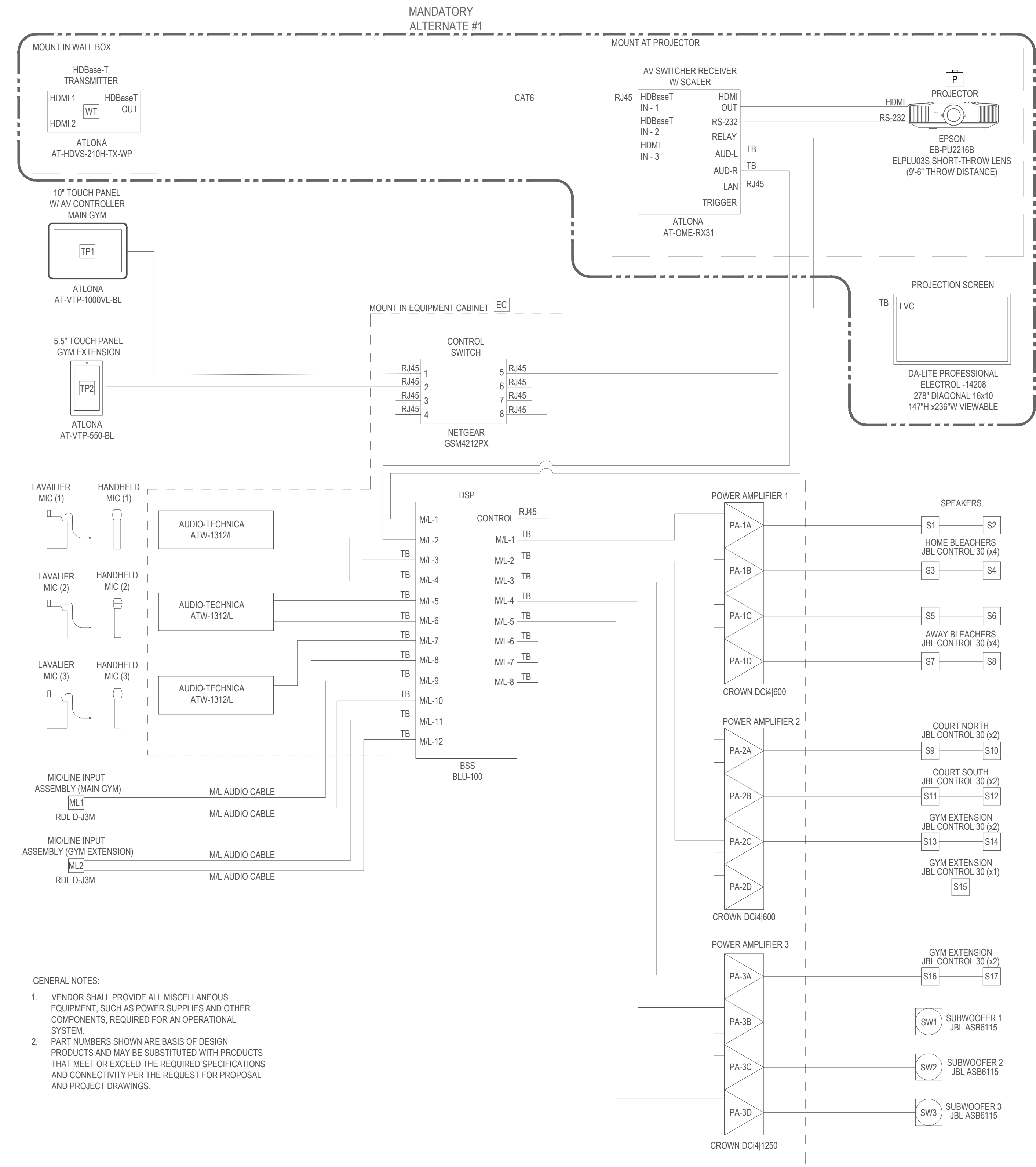
AUDIO VIDEO FLOOR PLAN SYMBOL LEGEND:

SYMBOL	DESCRIPTION	MANUFACTURER AND PART NUMBER
EC	EQUIPMENT CABINET	MIDDLE ATLANTIC DWR-24-26PD WALL MOUNTED
S#	TWO-WAY HIGH OUTPUT SPEAKER	JBL CONTROL 31
SW#	SUBWOOFER	JBL ASB6115 SINGLE 15"
TP1	TOUCH PANEL 1	ATLONA AT-VTP-1000V-BL
TP2	TOUCH PANEL 2	ATLONA AT-VTP-550V-BL
ML#	MICLINE INPUT ASSEMBLY	RDL D-3JM
WT	WALLPLATE HDBaseT TRANSMITTER	ATLONA AT-HDVS-210H-TX-WP
P	CEILING MOUNTED PROJECTOR	EPSON PU2216B / ELPLU035 SHORT-THROW LENS
PS	PROJECTION SCREEN	DA-LITE PROFESSIONAL ELECTROL 14208 278" DIAGONAL 16:10



1
GYMNASIUM AUDIO VIDEO FLOOR PLAN

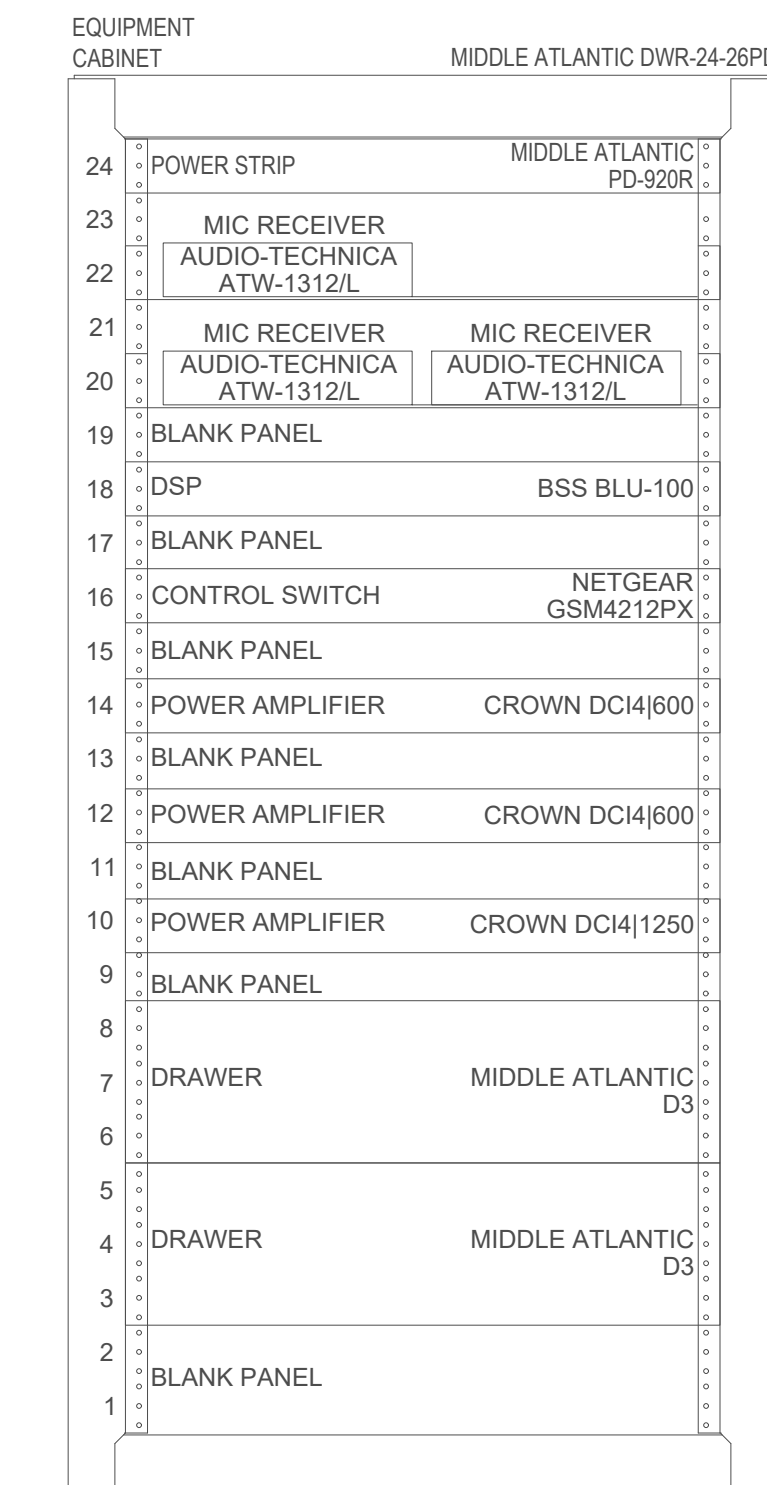
SCALE: NTS



- GENERAL NOTES:
- VENDOR SHALL PROVIDE ALL MISCELLANEOUS EQUIPMENT, SUCH AS POWER SUPPLIES AND OTHER COMPONENTS, REQUIRED FOR AN OPERATIONAL SYSTEM.
 - PART NUMBERS SHOWN ARE BASIS OF DESIGN PRODUCTS AND MAY BE SUBSTITUTED WITH PRODUCTS THAT MEET OR EXCEED THE REQUIRED SPECIFICATIONS AND CONNECTIVITY PER THE REQUEST FOR PROPOSAL AND PROJECT DRAWINGS.

2
GYMNASIUM AUDIO VIDEO SCHEMATIC

SCALE: NTS



3
GYMNASIUM RACK LAYOUT

SCALE: NTS

PROJECT NAME: _____

GENERAL AUDIO VIDEO NOTES:

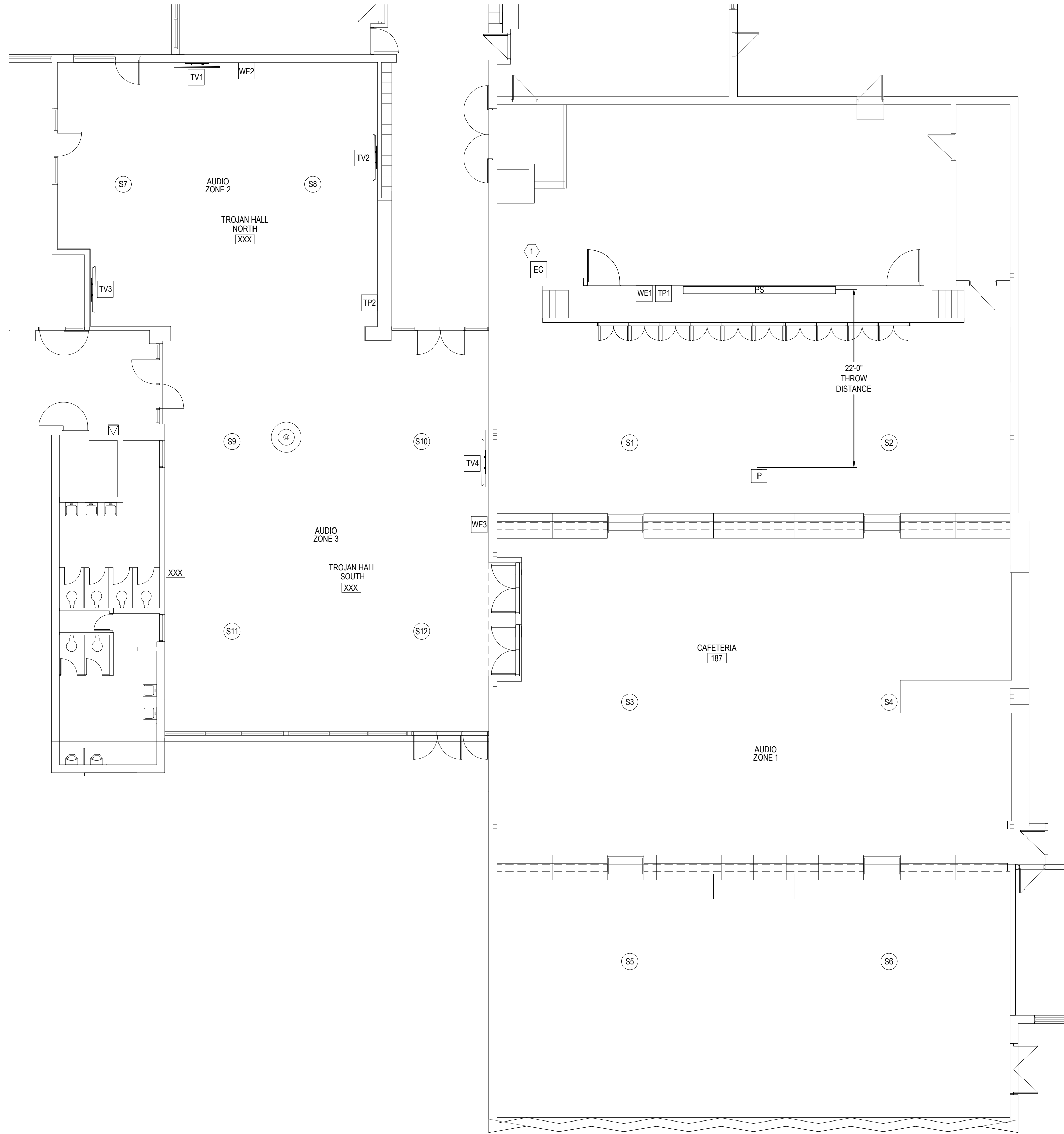
- E.C. TO PROVIDE ALL CONDUITS, SLEEVES, AND BACK BOXES FOR AUDIO VIDEO CABLING.
- PRODUCT MANUFACTURER AND PART NUMBERS SHOWN ARE BASIS OF DESIGN ONLY AND MAY BE SUBSTITUTED WITH PRODUCTS THAT MEET OR EXCEED THE SPECIFICATIONS OF THE BASIS OF DESIGN PRODUCTS.

KEYED AUDIO VIDEO NOTES:

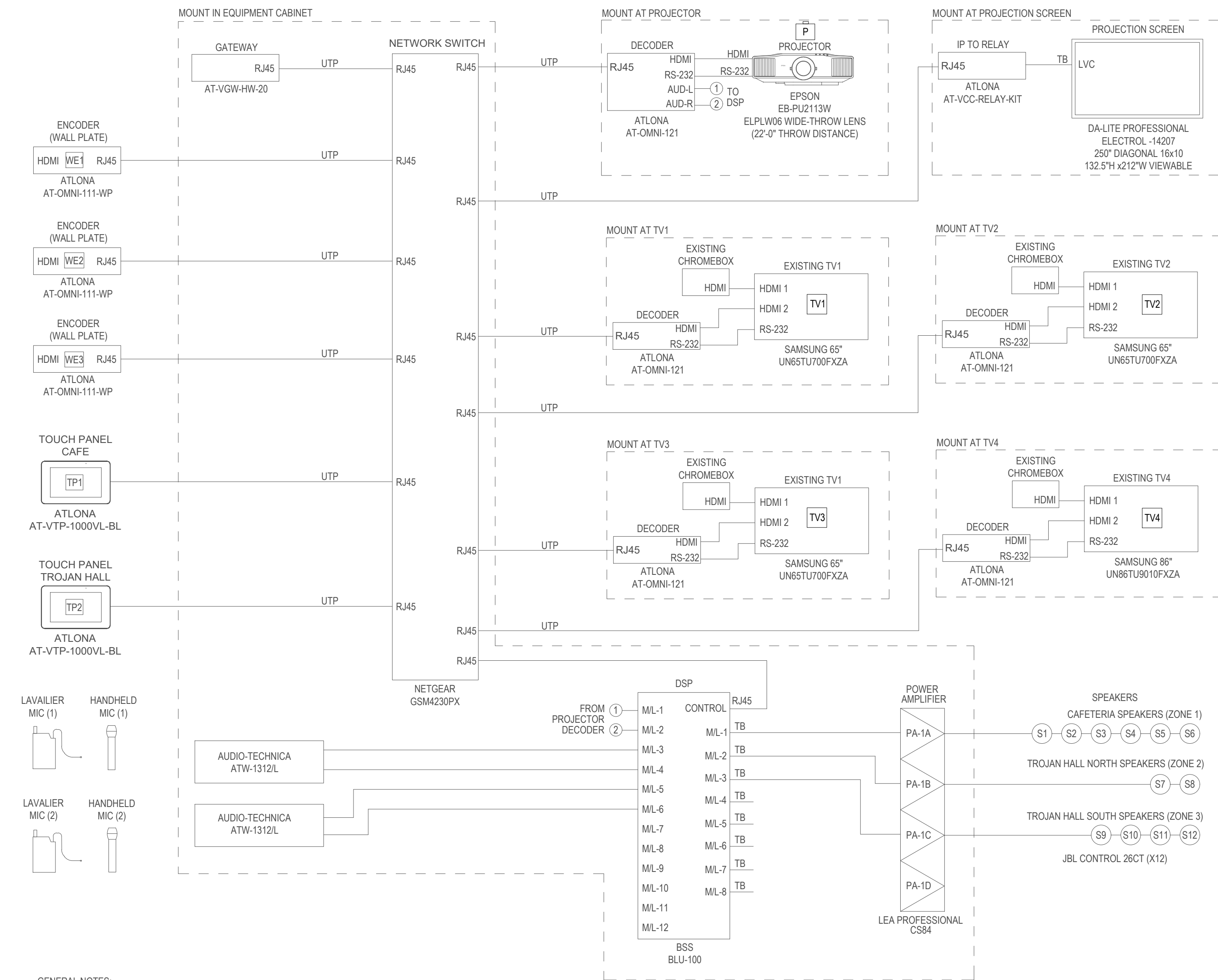
- VERIFY EXACT LOCATION WITH OWNER PRIOR TO INSTALLATION.

AUDIO VIDEO FLOOR PLAN SYMBOL LEGEND:

SYMBOL	DESCRIPTION	MANUFACTURER AND PART NUMBER
EC	EQUIPMENT CABINET	MIDDLE ATLANTIC BGR-19SA-27 FLOOR MOUNTED
SA	CEILING SPEAKER	JBL CONTROL 26CT
TP1	TOUCH PANEL 1	ATLONA AT-VTP-1000VL-BL
TP2	TOUCH PANEL 2	ATLONA AT-VTP-1000VL-BL
WE#	WALLPLATE AV ENCODER	AT-QMNI-111-WP
P	CEILING MOUNTED PROJECTOR	EPSON PU2213W / ELPLW06 WIDE-THROW LENS
PS	PROJECTION SCREEN	DA-LITE PROFESSIONAL ELECTROL 14207 230" DIAGONAL 16:10



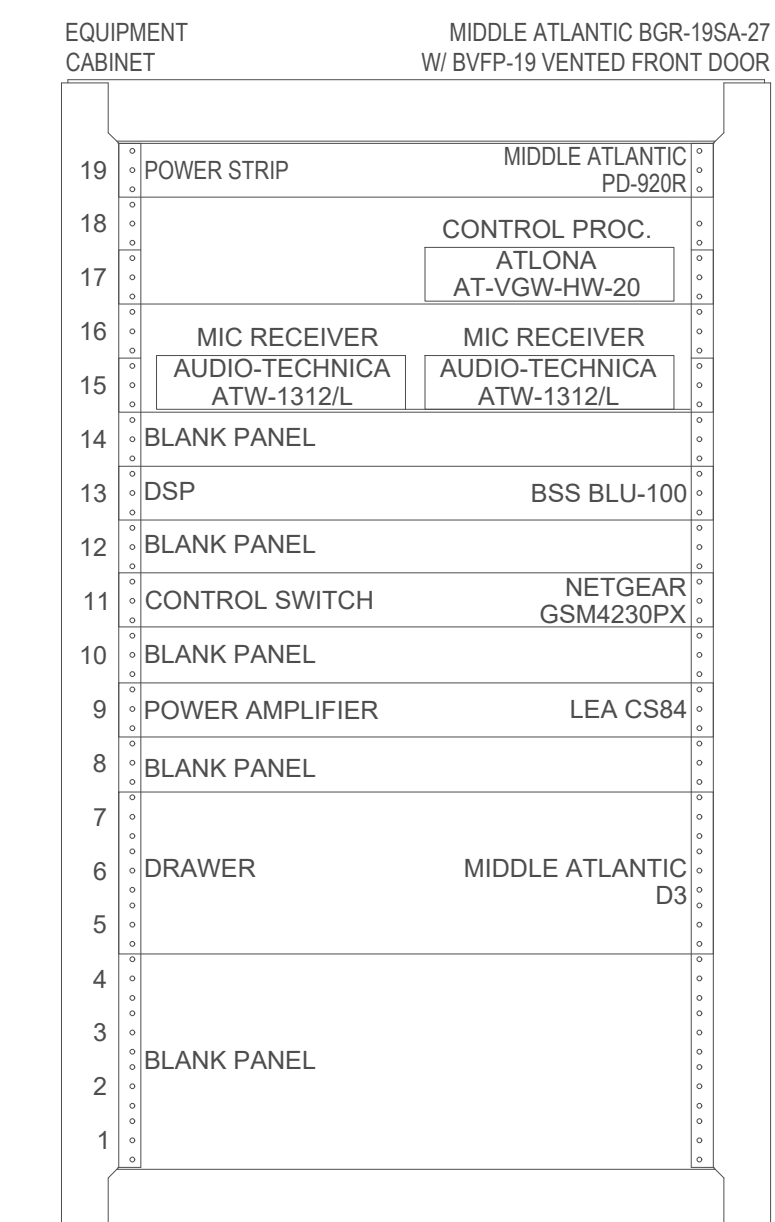
1
TA103
CAFETERIA/TROJAN HALL FLOOR PLAN
 SCALE: NTS



GENERAL NOTES:

- VENDOR SHALL PROVIDE ALL MISCELLANEOUS EQUIPMENT, SUCH AS POWER SUPPLIES AND OTHER COMPONENTS, REQUIRED FOR AN OPERATIONAL SYSTEM.
- PART NUMBERS SHOWN ARE BASIS OF DESIGN PRODUCTS AND MAY BE SUBSTITUTED WITH PRODUCTS THAT MEET OR EXCEED THE REQUIRED SPECIFICATIONS AND CONNECTIVITY PER THE REQUEST FOR PROPOSAL AND PROJECT DRAWINGS.

2
TA103
CAFETERIA/TROJAN HALL AUDIO VIDEO SCHEMATIC
 SCALE: NTS



3
TA103
CAFETERIA/TROJAN HALL RACK LAYOUT
 SCALE: NTS



PROJECT NO.:
23-CPS-AVS-01

DATE: ISSUED FOR:
 2023.04.14 BIDS

DESIGN BY: BMJ
 DRAWN BY: BMJ
 CHECKED: SJB

SHEET NAME:
**CAFETERIA/
 TROJAN HALL
 AUDIO VIDEO
 PLANS**

SHEET NO.:

GENERAL AUDIO VIDEO NOTES:

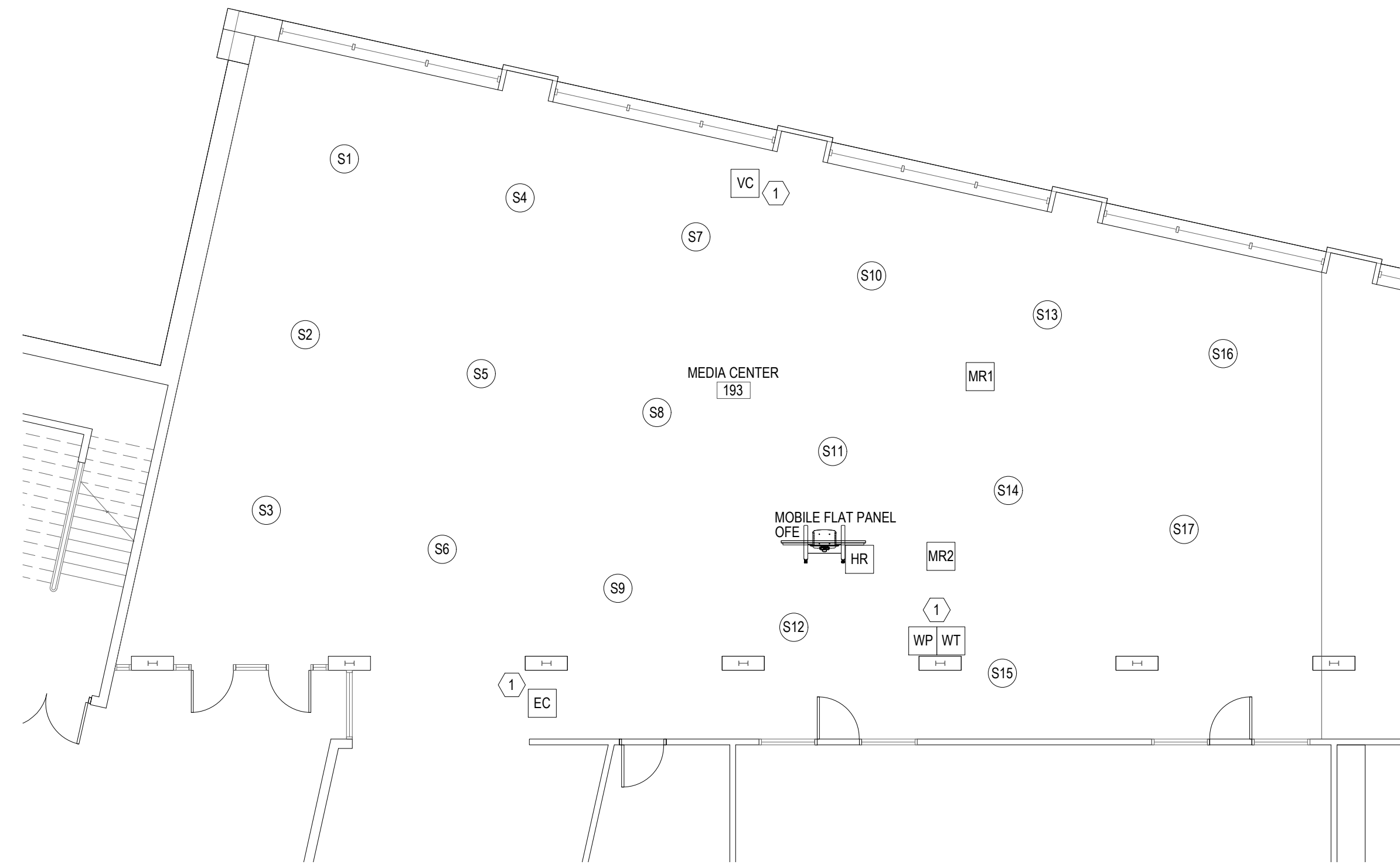
- E.C. TO PROVIDE ALL CONDUITS, SLEEVES, AND BACK BOXES FOR AUDIO VIDEO CABLING.
- PRODUCT MANUFACTURER AND PART NUMBERS SHOWN ARE BASIS OF DESIGN ONLY AND MAY BE SUBSTITUTED WITH PRODUCTS THAT MEET OR EXCEED THE SPECIFICATIONS OF THE BASIS OF DESIGN PRODUCTS.

KEYED AUDIO VIDEO NOTES:

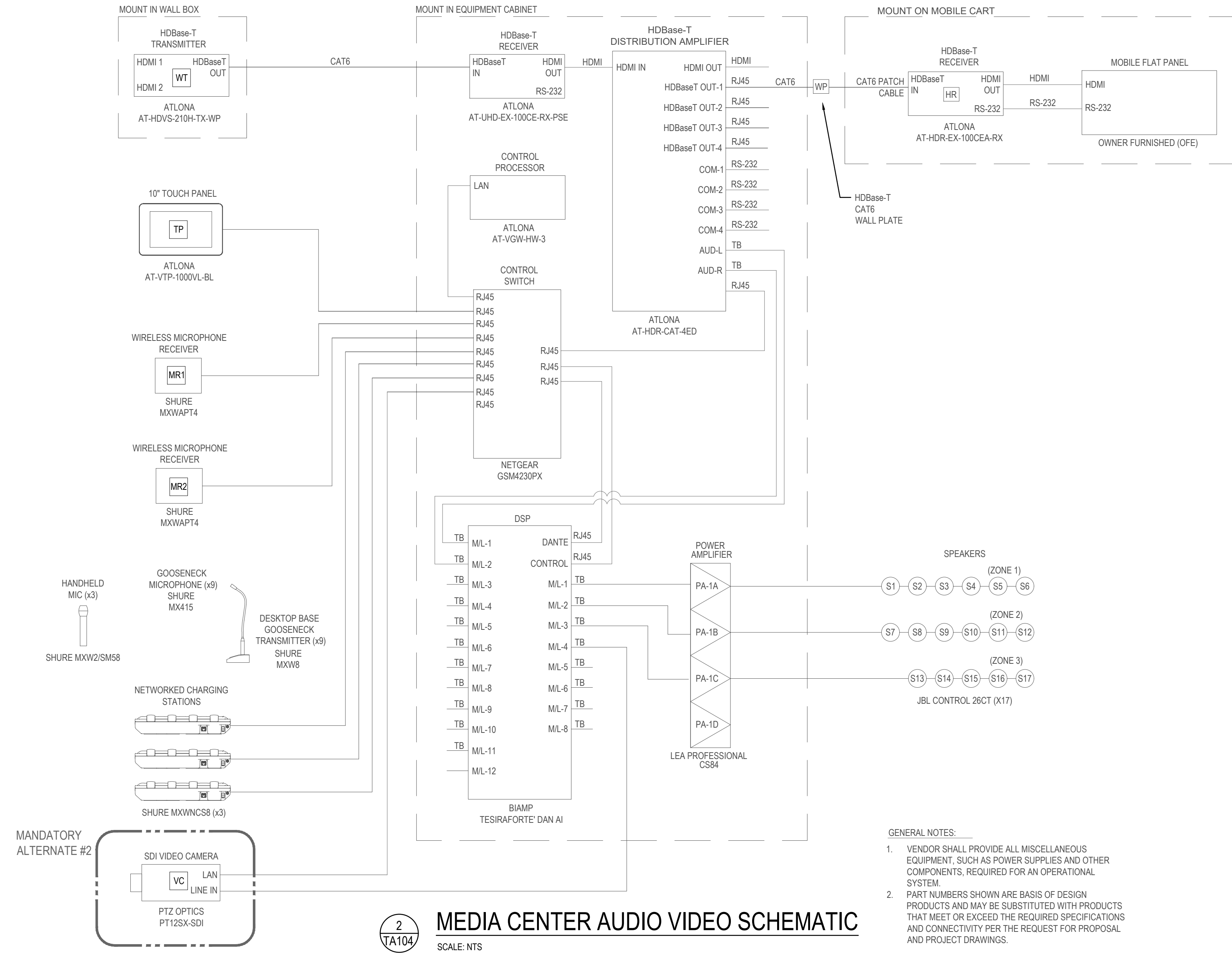
- VERIFY EXACT LOCATION WITH OWNER PRIOR TO INSTALLATION.

AUDIO VIDEO FLOOR PLAN SYMBOL LEGEND:

SYMBOL	DESCRIPTION	MANUFACTURER AND PART NUMBER
EC	EQUIPMENT CABINET	MIDDLE ATLANTIC BGR-19SA-27 FLOOR MOUNTED
S	CEILING SPEAKER	JBL CONTROL 26CT
TP	TOUCH PANEL	ATLONA AT-VTP-1000VL-BL
MR#	WIRELESS MICROPHONE RECEIVER	SHURE MXWAPT8
WT	WALL PLATE HDBaseT TRANSMITTER	ATLONA AT-HDVS-210H-TX-WP
HR	HDBase-T RECEIVER	ATLONA AT-HDR-EX-100CEA-RX
WP	HDBase-T WALL PLATE	CATEGORY 6 DATA JACK IN FACEPLATE
VC	SDI VIDEO CAMERA	PTZ OPTICS PT12SX-SDI

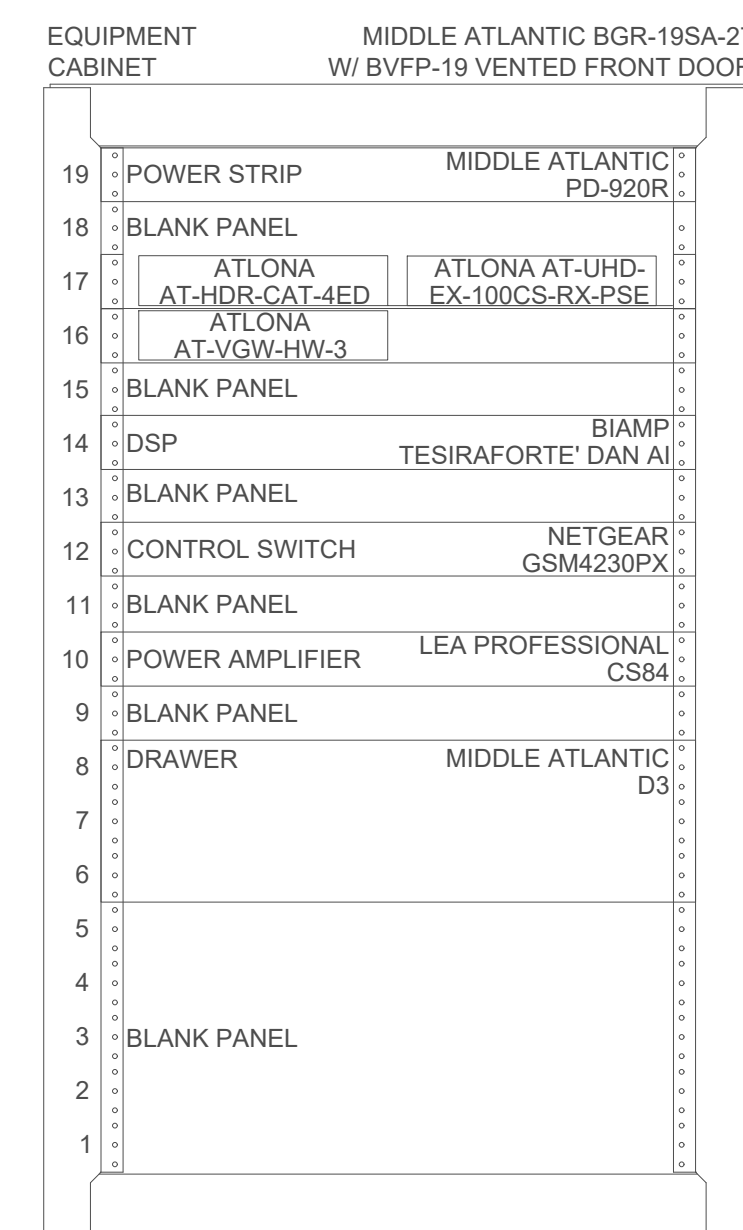


1
TA104
MEDIA CENTER FLOOR PLAN
 SCALE: NTS



- GENERAL NOTES:**
- VENDOR SHALL PROVIDE ALL MISCELLANEOUS EQUIPMENT, SUCH AS POWER SUPPLIES AND OTHER COMPONENTS, REQUIRED FOR AN OPERATIONAL SYSTEM.
 - PART NUMBERS SHOWN ARE BASIS OF DESIGN PRODUCTS AND MAY BE SUBSTITUTED WITH PRODUCTS THAT MEET OR EXCEED THE REQUIRED SPECIFICATIONS AND CONNECTIVITY PER THE REQUEST FOR PROPOSAL AND PROJECT DRAWINGS.

2
TA104
MEDIA CENTER AUDIO VIDEO SCHEMATIC
 SCALE: NTS



3
TA104
MEDIA CENTER RACK LAYOUT
 SCALE: NTS